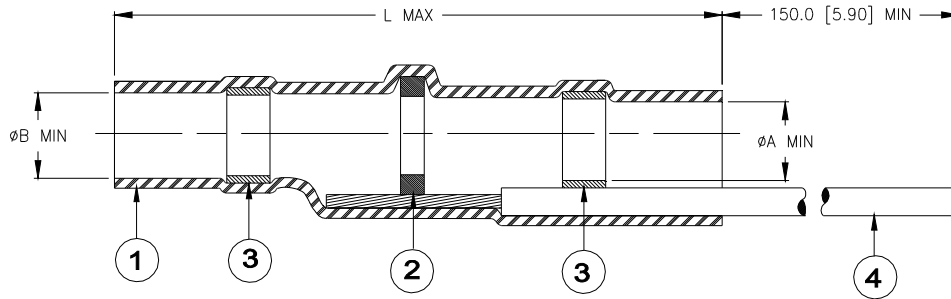


## SPECIFICATION CONTROL DRAWING



<sup>1</sup> Product Revision	Product Dimensions			Cable Dimensions					Qty: Item 2	
	<sup>2</sup> Product Name	øA min	øB min	L max	øD max	øE min	øF min	øG max		J
B-155-03-35-GA-CL	---	2.50 [0.098]	3.00 [0.118]	24.50 [0.965]	3.00 [0.118]	1.50 [0.059]	1.00 [0.040]	2.50 [0.098]	7.00±0.50 [0.276±0.020]	1
B-155-05-35-GA-CL	---	4.30 [0.169]	4.80 [0.189]	29.30 [1.154]	4.80 [0.189]	2.00 [0.079]	1.50 [0.059]	4.30 [0.169]	9.00±0.50 [0.354±0.020]	1
B-155-06-35-GA-CL	---	6.00 [0.236]	6.70 [0.264]	32.00 [1.260]	6.70 [0.264]	3.30 [0.130]	2.80 [0.110]	6.00 [0.236]	10.00±0.50 [0.394±0.020]	1
B-155-07-35-GA-CL	---	6.40 [0.252]	7.30 [0.287]	32.50 [1.280]	7.30 [0.287]	3.30 [0.130]	2.80 [0.110]	6.40 [0.252]	11.00±1.00 [0.433±0.040]	1
B-155-09-35-GA-CL	---	8.70 [0.343]	9.20 [0.362]	35.50 [1.398]	9.20 [0.362]	4.50 [0.177]	4.00 [0.157]	8.70 [0.343]	12.00±1.00 [0.472±0.040]	2
B-155-11-35-GA-CL	---	10.00 [0.394]	11.50 [0.453]	35.50 [1.398]	11.50 [0.453]	4.50 [0.177]	4.00 [0.157]	10.00 [0.394]	13.00±1.00 [0.512±0.040]	2
B-155-13-35-GA-CL	---	13.00 [0.512]	15.00 [0.591]	45.50 [1.791]	15.10 [0.594]	7.00 [0.276]	6.50 [0.256]	13.00 [0.512]	17.00±1.00 [0.669±0.040]	3

<sup>1</sup>Consult TE Connectivity for individual product revision. Contains more than 1 part name.

### MATERIALS

- INSULATION SLEEVE: Transparent heat-shrinkable radiation cross-linked modified polyolefin.
- SOLDER PREFORMS WITH FLUX: Qty: see table (one solder washer shown).  
SOLDER: TYPE Sn42Bi58 per ANSI / J-STD-006.  
FLUX: TYPE ROM1 per ANSI / J-STD-004.
- MELTABLE SEALING RINGS: Thermally stabilized thermoplastic.
- GROUND LEAD: Raychem cross-linked polyolefin-insulated wire, stranded tin-plated copper. Consult TE Connectivity for sizes and colors other than listed below.

<sup>2</sup>Part no. callout shall be replaced with;

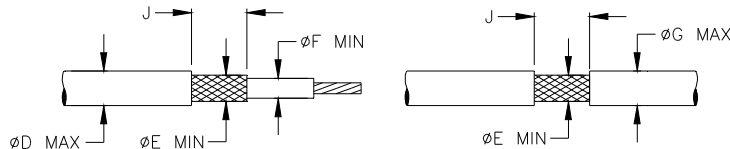
GA = wire size "AWG"; AWG 22 available.



CL = Lead color designation per MIL-STD-681. Available color: green (5); white (9).

### APPLICATION

- These controlled soldering devices are designed for termination of a bare or tin-plated copper shield on a cable having an insulation rated for at least +85°C, meeting the dimensional criteria listed in the table above.
- Temperature range: -55°C to +125°C.
- When installed properly, these devices will meet the requirements of TE Connectivity/Raychem Specification RT-1404.
- For installation procedure and application equipment, consult TE Connectivity /Raychem RPIP 824-00.

For best results, prepare the cable as shown:



		TE Connectivity 300 Constitution Drive, Menlo Park, CA. 94025, U.S.A.				TITLE: <b>SOLDERSLEEVE TERMINATOR WITH                  PRE-INSTALLED LEAD</b>						
Unless otherwise specified dimensions are in millimeters. [Inches dimensions are shown in brackets]						DOCUMENT NO.: <b>B-155-XX-35-GA-CL</b>						
TOLERANCES: 0.00 N/A 0.0 N/A 0 N/A		ANGLES: N/A  ROUGHNESS IN MICRON		TE Connectivity reserves the right to amend this drawing at any time. Users should evaluate the suitability of the product for their application.		PROD. REV.: SEE TABLE		DOC. ISSUE: 2		DATE: 16-Apr-11		
PREPARED BY: mforonda		DCR NUMBER: D050222		REPLACES: ---		CAGE CODE: 06090		SCALE: ---		SIZE: A		SHEET: 1 of 1

Print Date: 9-May-11

© 2011 Tyco Electronics Corporation, a TE Connectivity Ltd. Company. All Rights Reserved.

If this document is printed it becomes uncontrolled. Check for the latest revision.